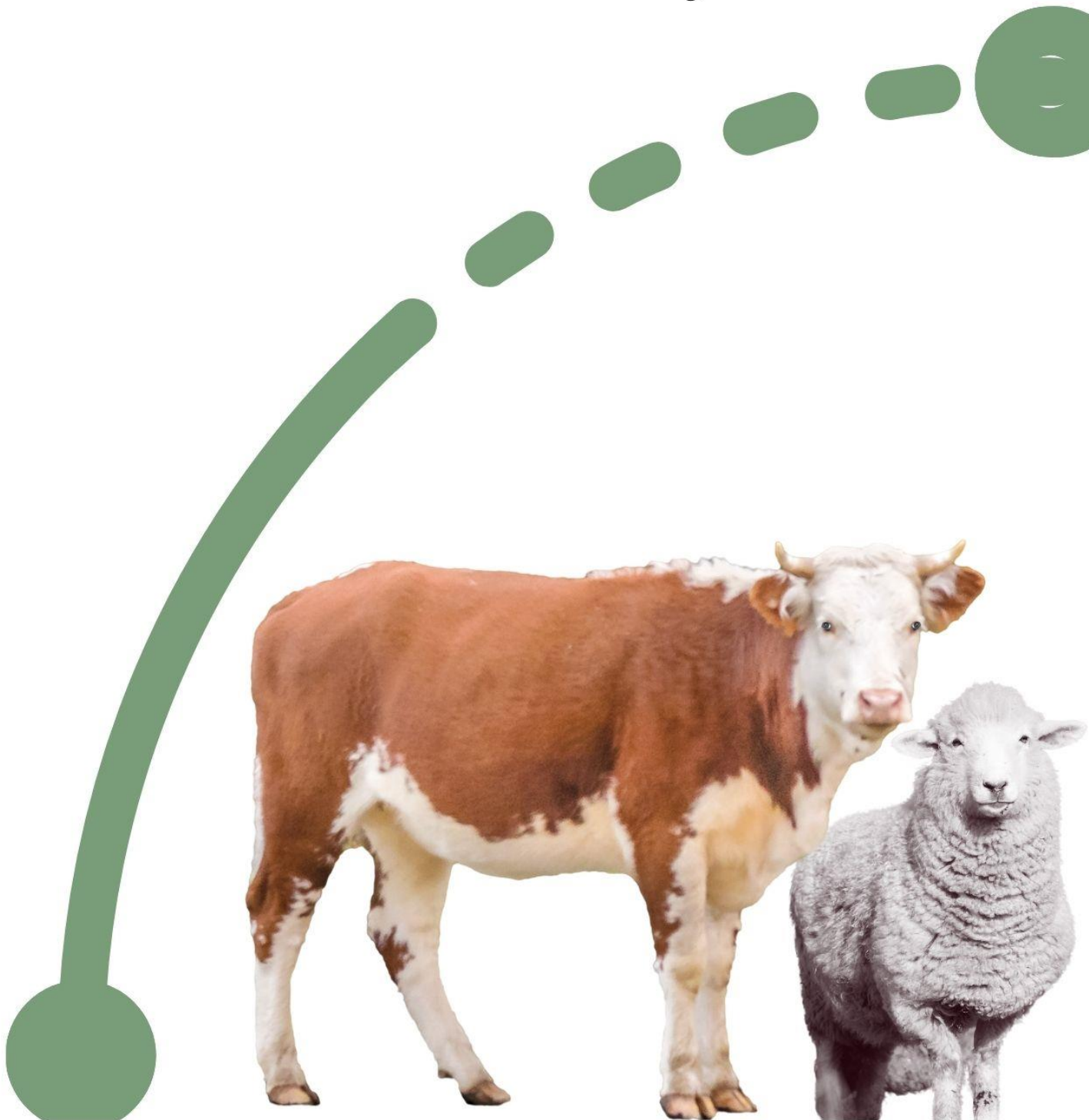


Animal Welfare Plan

June 2021



Suggestions and comments can help improve these arrangements. Feedback can include:

- out of date information
- errors, omissions or improvements
- inadequate information

To forward feedback, copy the relevant section, mark the proposed changes and forward to:

CEO
Shire of Corrigin
PO Box 221
Corrigin WA 6375

Number	Date	Amendment Summary	Author

Council Adopted:
LEMC Adopted:
Council Review:

_____ Date
LEMC Chairperson/ Shire of Corrigin President

Sources: Department Primary Industry and Regional Development (DPIRD) Local Plan for Animal Welfare in Emergencies (PAWE), WALGA

Disclaimer: The Shire of Corrigin makes no representations about the suitability of the information contained in this document or any material related to this document for any purpose. The document is provided without warranty of any kind to the extent permitted by law. The Shire of Corrigin hereby disclaims all warranties and conditions with regard to this information, including all implied warranties and conditions of merchantability, fitness for particular purpose, title and non-infringement. In no event shall the Shire of Corrigin be liable for any special, indirect or consequential damages resulting from the loss of use, data or profits, whether in an action of contract, negligence or other tortious action, arising out of or in connection with the use of information available in this document. The document or material related to this document could include technical inaccuracies or typographical errors.

Definitions

In line with State Emergency terminology

Animal Welfare: How an animal is coping with the conditions in which it lives. An animal is in a good state of welfare if (as indicated by scientific evidence) it is healthy, comfortable, well nourished, safe, able to express innate behaviour, and if it is not suffering from unpleasant states such as pain, fear, and distress. Good animal welfare requires disease prevention and veterinary treatment, appropriate shelter, management, nutrition, humane handling and humane slaughter/killing. Animal welfare refers to the state of the animal; the treatment that an animal receives is covered by other terms such as animal care, animal husbandry, and humane treatment. [World Organisation for Animal Health, May 2008].

Livestock: Any animal kept for the purposes of primary production, including:

- (a) cattle, sheep, pigs, poultry, alpacas, goats and deer; or
- (b) horses, including where used for recreation; or
- (c) any animals prescribed as livestock.

Pets: Domestic animals, primarily kept for companionship and which usually accompany the family when they leave the property such as dogs, cats, rabbits, rodents, fish and birds.

Wildlife: All native and introduced animals that live without regular human intervention or support. Does not include stray domestic animals.

Contents

PART ONE: PLAN	5
1.5 <i>Support emergency services planning, risk mitigation, response and recovery</i>	5
1. Aim and Purpose	5
2. Scope.....	5
3. Authority.....	6
4. Distribution	6
5. Associated Documents	6
5.1 Hierarchy of Emergency and Animal Welfare Management Plans	7
6. Risks	7
PART TWO: PREPARE	8
7. Roles and Responsibilities	8
7.1 Animal Owners	8
7.2 Shire of Corrigin.....	8
7.3 Shire Ranger (contracted)	8
7.4 Animal Welfare Coordinator.....	8
7.5 Support Agencies	9
PART THREE: ACTIVATE	10
8. Plan Activation and Escalation	10
8.1 Plan Activation.....	10
8.2 Line of Authority.....	10
8.3 Public Information.....	10
8.4 Escalation.....	10
PART FOUR: RESPONSE ACTIVITIES	11
9. Service Levels.....	11
9.1 Priority Order	11
9.2 Livestock	11
9.3 Horses.....	11
9.4 Temporary Shelter	11
9.5 Euthanasia and Disposal	11
9.6 Injured Services.....	12
9.7 Stray Animals	13
10. Facilities and Contacts	13
10.1 Temporary Evacuation Centres / Shelters	13
10.2 Equipment and emergency supplies, consumables	13
10.3 Contact Details	13
12. Finances	14
13. Traffic Management	15
14. Additional Resources	15
PART FIVE: RECOVERY	16
15. Recovery.....	16
Annexure 1 ANIMAL RESCUE FORM	17
ANNEXURE 2 Animal Rescue Register	18
ANNEXURE 3 Animal Rescue Public Display List.....	19

PART ONE: PLAN

In addition to minimising suffering of animals during emergency events or disasters it is imperative to ensure that Local Emergency Management Arrangements (LEMA) specifically provide for the management of animals. Animals are a part of community life within the Shire of Corrigin as pets, companions or as part of a commercial enterprise.

Within the Shire of Corrigin there are 179 dogs registered and 54 cats registered and an unknown number of other animals are kept such as sheep, cows, horses and alpacas.

Animal owners are ultimately responsible for the care and welfare of their animals at all times, including during emergencies. These arrangements have been developed and adopted to supplement animal owners own emergency planning or preparations, particularly after the immediate impacts of an emergency.

In this plan, human life and safety will always take precedence over animal life.

This plan links to the Shire of Corrigin Strategic Community Plan:

1.5 Support emergency services planning, risk mitigation, response and recovery

1. Aim and Purpose

The aim of this sub-plan is to outline and document the proposed arrangements for animal welfare in response to an emergency affecting animals kept within the Shire of Corrigin.

The purpose of this sub-plan is to document specific animal welfare arrangements to be implemented in response to an emergency affecting the community within the district of the Shire of Corrigin.

2. Scope

This sub-plan outlines arrangements in response to emergencies for the welfare of pets and livestock kept within the Shire of Corrigin and **includes:**

- Activation procedures
- Roles and Responsibilities
- Shelter Arrangements/facilities

This sub-plan **does not outline arrangements** for:

- The welfare of native or introduced wildlife. Parks and Wildlife is responsible for coordinating emergency arrangements for such animals.
- Exotic diseases in animals. Department of Agriculture and Food and Biosecurity Groups are responsible for the coordination of response activities in accordance with the relevant response plans

Area covered: The Shire of Corrigin consists of a main town site: Corrigin, and three smaller localities at Bullaring, Bulyee and Bilbarin. The Shire covers 3,095 square kilometres of agricultural farmland, crown land and town sites. At 1,200 hectares in size, the Corrigin Nature Reserve is one of the largest and most important areas of remnant vegetation in the central Wheatbelt.

3. Authority

This document has been prepared as a Sub-Plan to the Shire of Corrigin Local Emergency Management Arrangements (Feb 2020) prepared in accordance with s.41 of the Emergency Management Act 2005.

The development, implementation and revision of the Animal Welfare Plan (AWP) is the responsibility of the Shire of Corrigin in consultation with key stakeholders, government agencies and other support organisations in accordance with the related Emergency Management and other related Legislation

4. Distribution

Organisation	Number of copies
Shire of Corrigin	CEO, Works Manager, Ranger
Local Emergency Management Committee	Chair, Committee and Animal Welfare Coordinator
WA Police Service – Corrigin	
Water Authority	
Corrigin Volunteer Fire and Rescue	
St Johns Ambulance – Corrigin	
Corrigin District High School	
Great Southern Region District Emergency Management Committee	
State Emergency Management Committee	
Western Power	
Department of Biodiversity, Conservation and Attractions	
Department of Primary Industries and Regional Development	
Department For Communities	
Veterinarians	
RSCPA WA	

5. Associated Documents

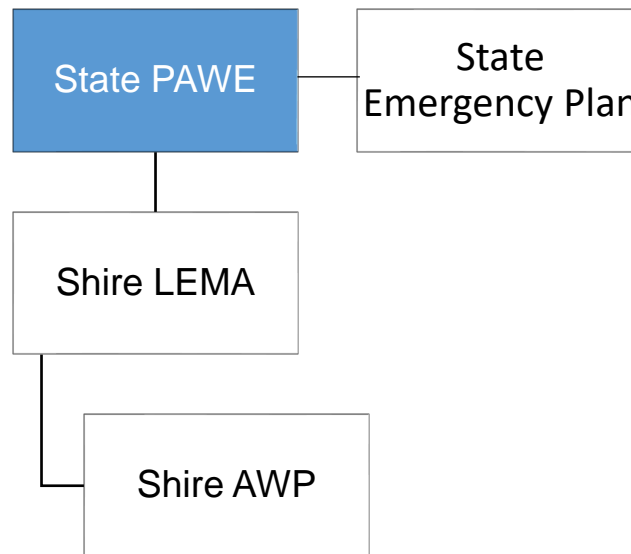
This Sub-Plan is subsidiary to the Shire of Corrigin Local Emergency Management Arrangements (LEMA) and as such should not be viewed in isolation.

The Shire of Corrigin has established the Corrigin Local Emergency Management Committee to advise and assist the Shire with the establishment and maintenance of the Local Emergency Management Arrangements.

Legislation and regulations related to this plan:

- Local Government Act 1995
- Animal Welfare Act 2006
- Biosecurity and Agriculture Management Act 2007
- Department. of Agriculture and Food (Codes of Conduct and Operating Codes)
- RSPCA (WA) Codes of Conduct
- Emergency Management Act 2005

5.1 Hierarchy of Emergency and Animal Welfare Management Plans



6. Risks

Risks identified in the Shire of Corrigin LEMA relevant to this Animal Welfare Plan include:

- Bushfire
- Storms
- Transport of animals – accidents e.g. sheep carriers, cattle crates etc
- Flood

Intensive agricultural activities in the Shire of Corrigin

- Feedlots

PART TWO: PREPARE

7. Roles and Responsibilities

7.1 Animal Owners

Animal owners are responsible for the welfare of their pets and livestock at all times, including disaster situations.

7.2 Shire of Corrigin

The responsibilities of the Shire are to prepare, plan for and to determine and document evacuation considerations.

7.3 Shire Ranger (contracted)

The Shire of Corrigin engages WA Ranger Services to provide ranger services to the shire. The Ranger reports to the CEO and is the primary officer responsible of undertaking the duties of the Animal Welfare Plan. It should be noted that the Ranger also fulfils other logistical roles during emergencies and their services may be limited.

7.4 Animal Welfare Coordinator

On activation of this sub-plan the Animal Welfare Coordinator (AWC) will:

- Coordinate service delivery in accordance with this sub-plan.
- Establish temporary animal welfare facilities if required.
- Coordinate incoming offers of assistance from any organisations suitably qualified in animal care.
- Request assistance from any person or organisation with the skills in animal care.
- Establish (if required) and coordinate the activities of the Animal Welfare Team (AWT).
- Request assistance from other Shire of Corrigin teams to assist in the rescue, transport or relocation of animals as required.
- Coordinate the activities of volunteers engaged in relation to the activation of this plan including the establishment and keeping of volunteer engagement records.
- Request assistance from any person or organisation within the Shire or externally to assist in the administration or logistics associated with activation of this plan.
- Ensure stocks of animal welfare support equipment and consumables are maintained and available at all times.
- Liaise with the Shire of Corrigin administration staff on communications.
- Participate in debrief sessions after the emergency as required.

7.5 Support Agencies

Agency	Role	Responsibilities
Department of Fire and Emergency Services (DFES)	Coordinating emergency services for a range of natural disasters and emergency incidents threatening life and property	Hazard Management Authority Animal Evacuation Coordination Support Agency
Department of Primary Industries and Regional Development (DPIRD)	Protect the sustainability of natural resources and accelerate ongoing economic growth, job creation and regional development	Livestock Authority Drought management Animal pest or disease Plant pest or disease which could result in an outbreak
Department of Biodiversity, Conservation and Attractions (DBCA) – Parks and Wildlife Service	Protecting our native animals, and does so through the management of lands and waters reserved under the Conservation and Land Management Act, a range of conservation initiatives operating on other lands, and programs	Hazard Management Authority Wildlife Management
WA Police	Responsible for policing in WA	Hazard Management Authority Traffic Management Investigation and Enforcement Staff for Evacuation Centre
Department for Child Protection and Family Support (CPFS)	Coordinating the provision of emergency welfare response services to people affected by emergency incidents	
RSPCA WA	Improve the welfare of animals and ensure they are treated with dignity, compassion and respect	Animal welfare and support
Vets	Supporting stockholders and animal owners	Animal welfare Medical services to animals, shelter
WALGA	Representative body for local government	Advice and support
Water Corporation	Principal supplier of water, wastewater, drainage and bulk irrigation services	Water supply management
Western Power	Ensuring energy is safely and optimally distributed across the SWIS	Power supply management
WA Country Health	Quality health care workforce and accessible health services to the regional population	Medical and health management
Bureau of Meteorology	Main provider of weather forecasts, warnings and observations to the Australian public	Weather information

Main Roads	Responsible for managing major arterial traffic routes in times of emergency	Traffic management
Telstra	Major telecommunications service provider	Communications management

PART THREE: ACTIVATE

8. Plan Activation and Escalation

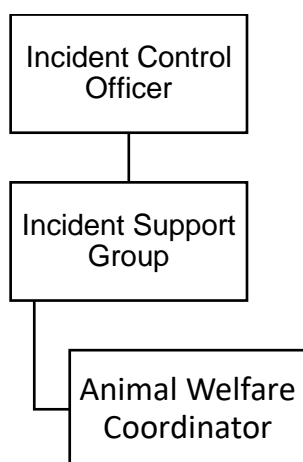
The responsibility to activate this plan is the Incident Control Officer using all the possible information and predictions at hand. The Incident Control Officer will appoint the Animal Welfare Coordinator.

8.1 Plan Activation

Triggers for the activation of the plan may include:

- Opening of an Emergency Relief Centre (ERC);
- Carcass disposal need; and /or
- Major animal emergencies such as fire, flood, drought and animal disease

8.2 Line of Authority



8.3 Public Information

The notification of the response and an appropriate communications plan will be determined and activated by the Animal Welfare Coordinator in collaboration with the Shire of Corrigin.

8.4 Escalation

Escalation to the State Support PAWE is in accordance with the State Support Plan – Animal Welfare in Emergencies section: *The Controlling Agency or HMA may determine the need to activate the arrangements under this Plan where:*

- *Animal welfare is beyond the capacity and capability of the owners or carers, and*
- *Any local or district arrangements are no longer sufficient or effective, or*
- *No local or district arrangements exist.*

Should the Shire of Corrigin believe the criteria for activation of the State Support PAWE are met, the local government representative within the emergency Incident Support Group should notify the Controlling Agency or Hazard Management Authority of the situation and recommendation to activate the state support PAWE.

PART FOUR: RESPONSE ACTIVITIES

9. Service Levels

9.1 Priority Order

In an emergency event, priority of rescue, shelter and care will be given to the following:

1. Assistance Dogs; Guide Dogs; Hearing Dogs – PERMITTED IN EVACUATION CENTRES; and
2. Service Dogs; Rescue Dogs; Police Dogs – PERMITTED IN EVACUATION CENTRES; and
3. Companion pets for the elderly, disabled, or high risk children or adults.

NOTE: Human life will always take precedent over animal welfare.

9.2 Livestock

The Animal Welfare Coordinator will identify the nearest appropriate property or paddock in which to temporarily hold/detain the livestock. During periods of sufficient staff resourcing attempts may be made to identify and contact the owners of the livestock to advise them of the location of their animals and request they make alternate arrangements for them, where safe to do so.

In the instance where the livestock owner cannot be contacted, arrangements should then be made to transport and impound the livestock at the nearest saleyards or other suitable area the Coordinator finds.

9.3 Horses

Facilities are available at the sale yards however, residents should be strongly encouraged where possible to evacuate their animals to friends/family in an area well outside of the emergency zone.

9.4 Temporary Shelter

With the exception of assistance/service dogs, animals are not permitted in Evacuation Centres. In the interests of assisting with the wellbeing of both the animals and their owners (as both may become greatly distressed if separated during an emergency event), the Animal Welfare Coordinator will allocate a suitable area near the Evacuation Centre where a Temporary Sheltering Facility may be established. This may be a Shire reserve, oval or other suitable shaded area nearby.

Note: Should a Temporary Sheltering Facility be established, requirements will include temporary fencing, shade tents, food and waste equipment, and watering equipment.

9.5 Euthanasia and Disposal

When an animal is identified as needing to be immediately euthanised or sent for salvage or slaughter, every effort will be made to contact the owner/carer of the animal and consult with them. Where this is not possible and the animal is suffering, the owner/carer will be notified as soon as possible of the outcome.

It is the responsibility of the person in charge of the animals at the time to arrange for the humane destruction or salvage slaughter of emergency affected animals where the animals will continue to suffer if they remain alive, or where the animals have little or no chance of survival. In situations where the owners cannot be found, indemnity for immediate humane destruction in their absence is provided by the Animal Welfare Act.

Wildlife emergency plans and protocols from the Department of Biosecurity, Conservation and Attractions (DBCA) detail the procedures for euthanasing wildlife. Under the Bushfire Protocols (which can be applied in other emergency events also) the triage veterinarian is responsible for assessing the need for immediate humane destruction.

Whilst it is prohibited to destroy native wildlife under the Wildlife Act, registered veterinary practitioners and appropriately accredited officers and volunteers who destroy wildlife in accordance with the Animal Welfare Act are exempt.

In order to reduce the risk to human health and to avoid adversely affecting morale of emergency personnel and the community, it is critical that animal carcasses are disposed of in a timely manner. The critical need to minimise the risks associated with disposal including biosecurity, environmental contamination and/or the spread of disease mean that it is essential approved disposal methods be adhered to at all times.

There are a number of carcass disposal options available including disposal at an appropriately licensed landfill site (Class II or III, prescribed premises Category 64 or 89), knackeries and rendering facilities, as well as high temperature incineration. Disposal on private and government owned sites such as unlicensed/decommissioned landfill sites may be allowed subject to Section 30A of the Environmental Protection Act. However, this will require the development of a site management plan.

There are several means of carcase disposal for losses of farm animals following fire, flood or drought:

1. **leave in situ:** this is a choice for isolated small animals, but is not recommended
2. **burial on-farm:** this has been the traditional method of carcase disposal following emergency incidents (fire, flood, drought)
3. **composting on-farm:** this is suitable for small animals but experience or technical expertise in composting is desirable
4. **off-farm disposal:** may be suitable where the farm size or conditions do not favour on-farm disposal; contact your local government for advice.

Further instruction on the disposal of livestock carcasses is available on the DPIRD [website](#).

9.6 Injured Services

Injured or sick animals should be assessed and their condition managed by veterinarians or other suitably qualified animal carers (i.e., holds a Certificate III or above in Animal Studies). In the event that the numbers of injured or sick animals overwhelms the capacity of local veterinary care providers the RSPCA should be contacted for advice and assistance.

The owners of injured or sick animals brought to evacuation centres should be instructed to convey their animals to a veterinary practice for assessment and treatment if required. The Animal Welfare Coordinator may if required to engage the services of a veterinarian to conduct a triage assessment of animals brought to an evacuation centre. The cost of any treatment veterinary would be the responsibility of the owner of the animal. Injured or sick animals should be quarantined or segregated from otherwise healthy animals while being

held (pending assessment) at evacuation centres. Native animals injured as a result of an emergency event should be referred to DBCA.

9.7 Stray Animals

The Animal Welfare Coordinator will identify the nearest appropriate property or paddock in which to temporarily hold/detain the livestock. Every attempt will be made to identify and contact the owners of the stray animals to advise them of the location of their animals and request they make alternate arrangements for them, where safe to do so.

In the instance where the livestock owner cannot be contacted, arrangements should then be made to transport and impound the livestock at the nearest saleyards, pound or other suitable area the Coordinator finds.

10. Facilities and Contacts

10.1 Temporary Evacuation Centres / Shelters

Animal Pound	Primary facility for the shelter of pets at shire depot	PH 90 632 203
Sale Yards	Primary facility for the shelter of livestock	PH 90 632 203
Corrigin Recreation Ground	Emergency Evacuation Centre	
Paddocks	Where it is necessary to relocate livestock use of the closest paddock unaffected by the incident concerned should be sought. Movement of such livestock must be carefully considered in terms of the logistics involved (will mechanised transport be required) and in relation to risks imposed by the incident concerned and the associated movement of community members and emergency responders	

10.2 Equipment and emergency supplies, consumables

Temporary fencing	Local stock agents Elders and Nutrien	
Food and water for domestic animals	Equipment (such as food and water bowls, dog leads) to be used in association with the temporary shelter of animals. A stock of consumables, particularly dog and cat food is kept at all times at the animal pound for the normal operation of the pound.	See animal health and supplies below
Donations		

10.3 Contact Details

Shire of Corrigin

CEO – Natalie Manton	PH 0427 425 727
DCEO – Kylie Caley	PH 0429 632 049
Manager of Works – Phil Burgess	PH 0429 632 203
Local Recovery Coordinator – Mike Weguelin	PH 0400 190 221
WA Ranger Services	PH 0456 775 309

Other

Heartlands Vet Hospital (York) – After Hours Emergency Service Available	PH 0418 264 423
Narrogin Veterinary Services	PH 9881 5417
Herald Street Veterinary Clinic (Narrogin)	PH 9881 6444
Pat and Chat (Merredin – mobile) After Hours Available	PH 0428 212 945
RSPCA WA	PH 1300 278 358
DPIRD (Narrogin Office)	PH 9881 0222
State Emergency Service (SES) Animal Health	PH 1800 084 881
Wildlife Wildcare Helpline (DBCA)	PH 9474 9055
DBCA (Wheatbelt Region Headquarters Narrogin)	PH 9881 9200
Main Roads (Narrogin)	PH 9881 0524
Western Power	PH 13 13 51
Water Corporation	PH 13 13 75
Corrigin Volunteer Fire and Rescue	PH 0428 632 149
Kulin SES	PH 0427 911 244
Environmental Protection Authority	PH 9222 7000
Corrigin Hospital	PH 9063 0333 / 0400 520 678
Corrigin Medical Centre	PH 9063 2107
Corrigin Police Station	PH 9063 2200
Corrigin Roadhouse	PH 9063 2210
Great Southern Fuel Suppliers (Corrigin)	PH 9063 2014
Transport / Carriers	
Kailam Transport (Corrigin)	PH 0488 940 976
Madgen Transport	PH 9063 2419
McCubbing Transport (Kondinin)	PH 9889 1051
Livestock Agents / Animal Health Suppliers	
Corrigin AgSolutions	PH 9063 2893 / 0415 153 639
Sellars Ag Services - Corrigin	PH 9063 2206 / 0436 478 042
Elders – Corrigin	PH 9063 4600 / 0428 464 801

12. Finances

The Local Government Act, Section 6.8(1)(c) grants the Shire President the authority to authorise unbudgeted expenses in an emergency. Subject to approval by the Shire President, the Animal Welfare Coordinator shall be responsible for authorising expenditure in relation to;

- Animal supplies;
- Veterinary expenses;
- Any other items deemed necessary for the function of this plan

These expenses shall be recorded.

13. Traffic Management

Main Roads WA are responsible for managing major arterial routes in times of an emergency. Local Government are responsible for managing local roads. Traffic management will be coordinated through the Incident Management Centre.

14. Additional Resources

Council will draw on resources from the surrounding Shires / organisations in the delivery of animal welfare services from Narembeen, Kulin, Kondinin, Quairading, Pingelly, Wickepin and Bruce Rock.

Requests for supplementary resources will be consistent with principles described in the State Emergency Response Plan / Local Emergency Management Arrangements.

Additional resources to enable the effective delivery of animal welfare services will be discussed with the Ranger and government agencies.

PART FIVE: RECOVERY

15. Recovery

The Shire of Corrigin has appointed Councillor Mike Weguelin as the Local Recovery Coordinator (LRC) in accordance with the Emergency Management Act 2005, S 41. (4) Mrs Lyn Baker will act in the role when the primary appointee is unavailable when an emergency occurs.

The responsibility for the declaration of the recovery phase will be made by the Incident Controller once the response phase of the Incident is under control or at a time determined by the Incident Controller.

The Local Recovery Coordinator will be guided by the Local Recovery Plan

The Animal Welfare Coordinator shall arrange a debriefing session for Shire staff, volunteers and associated agency representatives at the conclusion of activities related to this plan in response to an emergency event.

The Animal Welfare Coordinator shall prepare a report on activation of this plan to be provided to the LEMC and made available to the Post Incident Analysis, Major Incident Review or other similar review as required.

Additional notes:

Ongoing community communication is very important and the impacts to mental wellbeing should be considered in all communication whether it relates directly to animal welfare or not.

Avoid statements such as *no lives lost* or *no/minimal asset loss* as these can have an impact on those that have lost animals or lost livelihoods relating to animal industries.

The Shire of Corrigin has the responsibility for recovery and should consider the impact of animal loss on the community both socially and economically.

Annexure 1 ANIMAL RESCUE FORM

Name of Incident	
Date	
Shire Officer Completing Form	

Emergency Rescue Information			
Date / Time		Hazard	
Rescue Location		Officer	
Holding Location		Agency	
PEN No		Reason	

Animal Description			
Species	Dog Cat Other	Sex	
Breed		Sterilised	Y / N / Unknown
Colour		Microchip	Y / N / Unknown
Markings		Vaccination	Y / N / Unknown
Age	Less than 6mths	ID Registration	Y / N
	Up to 3yrs	Number	
	3yrs plus	Collar	Y / N

Owner Information	
Name	
Address	
Phone	
Email	

Release Summary	
Fees	Release No and Who to
Outcomes	Owner Reunite
	Re home
	Euthanize
Signature	



Pet Survival Plan



Pet Survival Plan

Just as we need to prepare for natural disasters we also need to prepare our animals. As the owner or carers of animals you have a duty of care to provide appropriate food, water, shelter and treatment for injury or disease for your animals.

Never turn animals out on to the road to run free. This is dangerous for fire trucks and vehicles, and you may be legally responsible if they cause a crash. Animals will panic during a bushfire which may result in injuries if they are not secured.

It is likely to be several days before emergency services give the all clear for you to be allowed to return home after an incident. When returning home it is important to obey the authorities and road closure information as there may be hazards in the area such as falling trees and branches, downed power lines and damaged or blocked roads.

Ignoring these instructions could put your life and the lives of emergency services personnel at risk

What if your pet is not a dog or cat?

The majority of households have pets such as dogs, cats and birds. If your pets include animals such as, reptiles, small livestock (pigs, fowls, chickens, goats, horses, cattle and sheep) or an aquarium; it is suggested that you contact agencies such as Department of Agriculture, the RSPCA, your animal's veterinarian or local pet shop for specialised advice and planning for emergencies.

Always Remember

- That your pet has access to plenty of food and fresh water.
- Your pet has shelter and bedding
- All of your animals are easily identifiable – tagged and or micro chipped
- Never leave an animal on a motor vehicle

Pet Emergency Kit – Checklist

As a pet owner the best thing you can do is to be prepared. This allows you to make informed decisions to protect your pets during emergencies or natural disasters. Having a pet emergency kit prepares your pets for relocation at short notice.

Like your household emergency kit, it is important to keep your kit in a handy place and make sure everyone knows where it is.

- Registration or licence papers
- Pet medications, medical and vaccination records, and veterinarian contact details
- Sufficient food and water for each animal for up to two weeks period, bring a canopener for tinned food
- Plastic bowls for food and water
- A familiar pet blanket or bedding, toys and grooming equipment
- A secure pet carrier cover, cage, leash and or harness to transport and keep animals safe
- If you are a bird owner place special food and water dispensers in bird cages and have a cover for the cage
- Consider your animal's sanitation requirements and include rubbish bags, kitty litter and dog litter disposal bags
- Include recent photos of your pet for identification
- Include gloves, disinfectant and paper towels for your own hygiene.




Pet Survival Plan

When developing your pet emergency plan it is important to consider the following:


- Animals will require a constant source of water and food, shade and safe place shelter
- If you need to move your pets to a safer place, think about where and *how* you will relocate them
- Animals are not allowed in relocation centres, except guide dogs

 Pet Emergency Kit (Checklist for each animal)

- Identification Details
- Medications
- Vaccination records
- Veterinarian details
- Bedding, toys
- Grooming Equipment
- Food, can opener
- Water and bowl
- Secure Carrier/cage, lease, harness
- Sanitation needs

 Pet Medical Information


- Name.....
- Medication.....
- Dosage and how often.....

 Pet Medical Information


- Name.....
- Medication.....
- Dosage and how often.....

 Important Telephone numbers

Police Fire Ambulance 000
State Emergency Service 132500
Veterinarian
RSPCA 1300 CRUELTY (1300 278 3589)
Local Council or Government
Local Ranger
Pet Insurance Provider
Pet information and advisory service
Workplace
Workplace
Neighbours
Neighbours

 Household contact details

Name
Phone – Work and Home
Mobile Number
Email Address

 Nominated household emergency contact

Nearby contact name
Address
Home/work phone numbers
Email Address
Out of town contact name
Address
Home/work phone numbers
Email Address