



Corrigin  
Community Resource Centre

# Newsletter



**OCTOBER 2025 | Edition 124**

Photo Credit: Angie Roe Photography



# SEPTEMBER COUNCIL DECISIONS

## COMMUNITY ASSISTANCE PROGRAM – REQUEST TO WAIVE FEES

Support will be provided to the Corrigin Kelpies for the Wheatbelt Senior Games, scheduled for 24 March 2026. In-kind assistance to the value of \$936 will cover venue hire, PA use, secretarial support, printing, laminating, and related costs, with funding drawn from the Community Assistance Program in the 2025/2026 Budget.

## LONG TERM FINANCIAL PLAN 2025/2036

A new Long-Term Financial Plan for 2025/2036 has been adopted, setting out the Shire of Corrigin's financial direction for the next decade. The plan forms part of the Integrated Planning and Reporting Framework, aligning with the Council Plan 2025/2036 and ensuring compliance with the Local Government Act 1995.

## DUAL FIRE CONTROL OFFICERS 2025/2026

Endorsement has been given for Dual Fire Control Officers from the neighbouring Shires Kulin, Brookton, Pingelly, and Wickepin to assist within Corrigin for the 2025/2026 bush fire season. These officers support cross-boundary fire management, but are not permitted to issue burning permits within the Shire of Corrigin.

## INCIDENT AND BUSINESS CONTINUITY

An updated Incident Management and Business Continuity Response Plan has been adopted, along with a supporting procedures manual. These documents outline how the Shire will respond to emergencies or disruptions to ensure essential services can continue with minimal interruption.

## WALGA PROPOSED MOTIONS

Several important motions will be supported by the Shire at the upcoming WALGA State Council meeting. These include calls for more funding to support medical services in remote areas, better short-term accommodation and homelessness solutions in regional WA, more flexibility for councillors to attend meetings electronically, fairer reimbursement for rate exemptions, and protections for Local Governments when rating Miscellaneous Licences. These motions aim to strengthen services and fairness for communities across the State.

## ROEROC MEMORANDUM OF UNDERSTANDING AMENDMENT

The Shire has endorsed a new Memorandum of Understanding with Roe Regional Organisation of Councils (Roe ROC) for the period September 2025 to June 2029. This agreement strengthens collaboration between member Councils to improve shared services and regional outcomes for the community.

## ROEROC APPLICATION FOR MEMBERSHIP BY THE SHIRE OF WICKEPIN

Support has been given for the Shire of Wickepin to join the Roe Regional Organisation of Councils (RoeROC). This membership will strengthen regional collaboration and provide shared benefits for communities across the Roe region.

## SHIRE OF WICKEPIN LOCAL PLANNING STRATEGY 2025

The Shire of Corrigin has reviewed the draft Local Planning Strategy 2025 from the Shire of Wickepin and has no objections. No formal submission will be made, supporting the strategy as proposed.

*Ordinary Council Meetings are held at 6.00pm on the third Tuesday of each month at the Shire Administration Office. Members of the public are welcome to attend.*

*Upcoming dates: 21 October, 18 November, and 16 December.*

## JOIN OUR TEAM!

### Building Officer NOW OPEN

The Shire of Corrigin is looking for a highly motivated and skilled Building Officer to join our team.

This role will see you working across various Shire facilities to ensure they're safe, functional, and well-maintained for the community. If you have experience in building maintenance and construction, and are confident in coordinating projects and supervising contractors, we want you on our team!

Apply today and help us build a brighter future for our community! Applications close 4pm Friday 17 October 2025.

For more information, visit [www.corrigin.wa.gov.au/council/notice-board/employment.aspx](http://www.corrigin.wa.gov.au/council/notice-board/employment.aspx)



# SHIRE UPDATES



## POOL COVERS

The start of the 2025/2026 swimming season is getting close! New covers have recently been installed on the outdoor pool to help maintain water temperature and reduce evaporation.

The opening date for the outdoor pools is dependent on water testing but is expected to be in early November. Keep an eye on the Shire of Corrigin Facebook page for updates.



## STEVENSON SCHOLARSHIPS FOR EDUCATION

The Stevenson Scholarship, established by Edna Stevenson, provides support for the education of residents in the Shire of Corrigin. The scholarship is administered by the Edna Stevenson Trust, and applications for 2025 are now open.

The next meeting will be held on Monday, 10 November. Applications must be submitted at least one week prior to the meeting date to be considered for inclusion in the agenda. Applications received after this deadline will be considered at the following meeting.

Application forms can be downloaded from the Shire of Corrigin website. For further information, please contact the Shire at 9 Lynch Street, Corrigin, by phone on 9063 2203, or by email at [eso@corrigin.wa.gov.au](mailto:eso@corrigin.wa.gov.au)



## PUBLIC NOTICE

The Shire of Corrigin invites public comments on the intention to dispose of 8 Haydon Close (Lot 5 Granite Rise Estate) to Bogdan Hariton Dana and Anca Antoaneta Dana for \$45,000 (GST inclusive). The market value of the property as determined by Council in November 2024 is \$45,000 (GST inclusive), Corrigin.

Full details of the disposal and how to make comment can be found on the website [www.corrigin.wa.gov.au/news/notice-of-proposal-to-dispose-of-property/1509](http://www.corrigin.wa.gov.au/news/notice-of-proposal-to-dispose-of-property/1509)



## XERO WORKSHOP

Earlier this month, the Corrigin CRC hosted a Xero Accounting Workshop with Digit. The small group size meant participants enjoyed plenty of one-on-one support.

If you're interested in future Xero workshops or other short courses, please contact the Corrigin Community Resource Centre on 9063 2778 or email [admin@corrigin.wa.gov.au](mailto:admin@corrigin.wa.gov.au) with the following details:

- The course you're interested in
- Your preferred time of year



## WORKS CREW

The road crew has been carting gravel and grading Dwarlaking Rd, Bulyee - Kweda Rd, and Simpson Rd. Potholes and edge repairs were addressed on Wickopin Rd, Drywell Rd, and Bendering Rd, as well as the Bulyee - Kweda Rd floodway. Tipton Rd guideposts were renewed, new traffic bump stops installed along the main street, and work has begun on a new concrete retaining wall at the Waste Facility for building rubble.

The town crew prepared the main oval for the Corrigin Show and completed post-season maintenance. Vertimowing has started at Apex Park, the Cricket Pitch, and the main oval. Verge spraying, seasonal rose pruning, and regular watering of parks and ovals are also underway.



## SCAM AWARENESS WORKSHOP

The recent Scam Awareness Workshop, delivered by Rebekah from NBN, helped community members learn how to spot and avoid scams. Participants valued the practical tips, real-life examples, and advice on what to do and where to report if targeted.








# FIREBREAKS

## MUST BE IN PLACE BY 31 OCTOBER 2025

All firebreaks and reduction of fire hazards are due to be completed by 31 October 2025 and must remain in place until 15 April 2026 as required by the section 33 of *Bush Fires Act 1954*.

### FIREBREAK CONDITIONS

-  Rural land must have mineral earth firebreaks of at least 2.44m for each 250ha inside, and must have firebreaks on boundaries adjoining public roads and railways.
-  All land exceeding 0.2ha must clear and maintain 2.44m firebreak within 20 meters of buildings, fuel tanks and hay sheds.
-  Townsite land is required to clear all inflammable material and fire hazards, and may need to have firebreaks depending on the property size.
-  Inspections will be undertaken after 31 October 2025. Failure to comply may result in penalties up to \$5,000.
-  Full details of firebreak requirements can be found on the Shire of Corrigin website [corrigin.wa.gov.au/services/emergency/bushfire-control.aspx](http://corrigin.wa.gov.au/services/emergency/bushfire-control.aspx)

## IMPORTANT DATES FOR BURNING

UNRESTRICTED BURNING	16 APRIL to 18 SEPT (No permit required)
RESTRICTED BURNING	19 SEPT to 31 OCT (Permit required)
PROHIBITED PERIOD	1 NOV to 15 FEB (No burning, permits will not be issued)
RESTRICTED BURNING	16 FEB to 15 APRIL (Permit required)



CORRIGIN



## CONTAINERS FOR CHANGE

8 Goyder Street

Wednesday 1.00pm - 5.00pm  
Saturday 8.30am - 12.30pm

For bulk returns of 800+ containers, call the Shire of Corrigin on 9063 2203 to organise a drop-off time. Wednesday's only.



#### Please Note

We are now a cashless facility.  
You will only be able to receive payment for your container deposits via the Containers for Change Membership ID scheme.  
[c4change.info/signup](http://c4change.info/signup)





# COMMUNITY CITIZEN OF THE YEAR AWARDS

## NOMINATIONS NOW OPEN

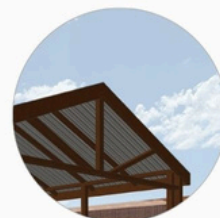
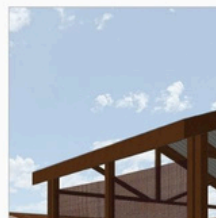
Know someone or a group that's gone above and beyond for your community? Nominate them today!

- Community Citizen of the Year
- Young Community Citizen of the Year (under 25)
- Senior Community Citizen of the Year (over 65)
- Active Citizenship (Group or Event)

Download a form from our website, or pick one up from the Shire Admin Office or CRC.

**Nominations close 5pm Friday 5 December 2025**

## Bilbarin Hall - Interpretation Plan Community Consultation



stephen  
carrick  
architects



## Corrigin Community Resource Centre

**Tuesday 21 October 2025  
at 1pm**

**Light catering provided**

Please RSVP to  
[ao@corrigin.wa.gov.au](mailto:ao@corrigin.wa.gov.au), or by phone  
at the Shire Office 08 9063 2203



# 2025 Corrigin

PARK PARTY

**FRIDAY 12 DEC 2025**  
**4.30-8.00PM**  
**ROTARY PARK**

**Free** → **Live Music by Tamsyn Crombie**  
**Face Painting | Bubble Station**  
**Spinning Flowers Display | Laser Tag**  
**Bouncy Castle | Meltdown**  
**Toddler Adventure Ride**  
**Santa Visit & LED Light Show**

**Food Stalls**  
**Spinning Flowers Workshop**  
\$7 – Cash only, payable to Kite Kinetics

Brought to you by the



Thank you to our sponsors so far!



**COLLGAR**  
RENEWABLES



SMITH & CO RURAL







# Better Waste Management Starts with You: Using the Right Bin for a Cleaner Community

As part of our commitment to a cleaner, greener future for our region, the Shire of Corrigin wants to remind everyone about the importance of using the correct bins and practising responsible waste management.

## Why Proper Bin Use Matters

When we place the right items in the right bin, we help maximise waste diversion - keeping valuable materials out of landfill and turning them into new products. This process supports waste recovery, where materials like paper, plastics, glass, and metals are collected and recycled to reduce environmental impact.

## Waste Minimisation: What You Can Do

- ✓ Reduce single-use plastics by choosing reusable bags and containers.
- ✓ Repair and donate unwanted items instead of throwing them away.
- ✓ Buy products with less packaging and support local sustainable businesses.
- ✓ Compost your food scraps at home to reduce kitchen waste.

By working together to properly sort our waste and use the transfer station responsibly, we can increase recycling rates, reduce landfill, save valuable resources, and protect our natural environment for generations to come.

## Using the Local Transfer Station

For bulky items, household hazardous waste, and other materials not accepted in your bins, please take these to the Corrigin Waste Transfer Station. Proper disposal at the transfer station helps protect our environment and supports further waste recovery efforts.

## Your Bin Guide:



### Yellow-lid Recycling Bin:

- ✓ Only clean recyclables such as paper, cardboard, plastic containers, and metal cans belong here.
- ✗ No food scraps, glass bottles and jars or soft plastics, please!



### Green-lid General Waste Bin:

For all other household waste that cannot be recycled or composted. Please minimise what goes in here to help reduce landfill.

For more information on waste collection schedules, transfer station opening hours, and what goes in each bin, visit [www.corrigin.wa.gov.au](http://www.corrigin.wa.gov.au).



# DATES TO REMEMBER

7 October  
Kites in the Sky 10am-12pm @ Rotary Park

13/14 October  
Heavy Vehicle Pilot Training @ CRC

21 October  
Bilbarin Hall Interpretation Plan - Community Consultation  
@ 1pm CRC

21 October  
Ordinary Council Meeting 6pm

29 October  
Practical Driving Assessments

31 October  
Restricted Burning period ends  
Dog and cat registrations due

1 November  
Prohibited Burning period begins

18 November  
Ordinary Council Meeting 6pm

5 December  
Nominations close for Community Citizen of the Year  
Awards

12 December  
Park Party @ Rotary Park

16 December  
Ordinary Council Meeting 6pm

25 December to 1 January  
Shire and CRC Office Christmas closure

26 January  
Australia Day

## OPENING HOURS Administration Office & CRC

Monday	8.30am - 4.30pm
Tuesday	8.30am - 4.30pm
Wednesday	8.30am - 4.30pm
Thursday	8.30am - 4.30pm
Friday	8.30am - 4.30pm (closed 12.30pm - 1.30pm)

## Waste Transfer Station

Monday	10.00am - 2.00pm
Wednesday	10.00am - 2.00pm
Friday	10.00am - 3.00pm
Saturday	10.00am - 3.00pm
Sunday	9.00am - 12.00pm

