

# RATES AND BUDGET 2025-2026



FOR A SAFER STATE



## Emergency Services Levy for a Safer State

Every dollar raised through the Emergency Services Levy (ESL) plays a vital role in delivering essential fire and emergency services in Western Australia (WA).  
Wherever you call home in WA, you will see the ESL hard at work helping to protect our communities.  
The ESL supports the Department of Fire and Emergency Services (DFES) and approximately 26,000 fire and rescue, marine and emergency services volunteers, along with over 1,700 firefighters and staff.

Together, they respond to bushfires, storms, cyclones, floods, road crash rescues, hazardous spills and search and rescue missions on land and sea.  
Your ESL contribution also helps fund fire and emergency vehicles, aerial fleets, life-saving equipment and emergency services facilities, ensuring frontline responders have all the tools they need to keep Western Australians safe.  
To learn more about how your ESL is calculated, including information on the different rates, limits and concessions visit [dfes.wa.gov.au/esl](https://dfes.wa.gov.au/esl).

Last financial year the ESL facilitated firefighters and emergency services volunteers to respond to over 27,000 emergencies throughout WA. These include:

**Fire Response**  
Battled over 9,600 fires, including more than 5,200 bushfires and 1,100 structure fires

**Severe weather**  
Responded to around 1,200 requests for assistance after storms, cyclones and floods



**Marine rescue**  
Performed over 1,600 search and rescue missions at sea

**Road crash rescue**  
Attended more than 3,000 road crash rescues

In 2025/26 the ESL will provide essential funding for:



**Triple Zero (000)**

Operating 24/7, responding to around 37,000 emergency calls across the State



**Bushfire mitigation**

Reducing bushfire risk to protect people, property and the environment



**Training**

Providing firefighters and volunteers with opportunities to enhance skills and train for emergencies



**Fire and emergency vehicles**

Equipping our firefighters and volunteers with over 2,400 emergency response vehicles



**Safety and education**

Preparing WA communities to reduce risks and build resilience in the face of natural disasters and emergencies



**Fire and emergency facilities**

Operating around-the-clock with assets and equipment ready to respond to emergencies



**Aerial firefighting fleet**

Flying a network of water bombers, heliacs and aircrews for over 1,700 hours to drop 13 million litres of suppressant, gather intelligence and transport emergency equipment and personnel



**Emergency WA website and app**

Issuing over 11,000 alerts and warnings, with more than 18 million push notifications sent to 200,000+ app users – keeping communities informed throughout emergencies



**Emergency services support**

Funding grant programs to assist Bush Fire Brigades, State Emergency Service Units and Marine Rescue WA groups



For more information or to request brochures in large print, Braille or another language, call 1300 136 099 or visit [dfes.wa.gov.au/esl](https://dfes.wa.gov.au/esl)







## Your Elected Members

The Shire of Corrigin is represented by a team of dedicated Councillors, including the Shire President and Deputy President. Councillors are elected by the community and play a key role in shaping the future of our Shire. 2025 is an election year for new Councillors. If you're interested in contributing to fair and effective decision making for the community, contact the Administration Office to learn more. To find out more about our current Councillors and how you can contact them, visit our website [corrigin.wa.gov.au](http://corrigin.wa.gov.au)

## Your Executive Staff

Our Executive Team are responsible for delivering the day-to-day operation of the Shire of Corrigin, and supporting Council in achieving its strategic goals. The team includes:

**Chief Executive Officer (CEO) - Natalie Manton**  
**Deputy Chief Executive Officer (DCEO) - Myra Henry**  
**Manager of Works and Services - Terry Barron**

Together, the Executive Team work together to ensure the Shire runs smoothly and continues to provide quality services, facilities, and projects for the Corrigin Community. To find out how to contact our executive staff, you can visit our website [corrigin.wa.gov.au](http://corrigin.wa.gov.au) or call the Shire of Corrigin Administration Office on **08 9063 2203**

# WASTE COLLECTION SERVICES

## CORRIGIN CONTAINERS FOR CHANGE REFUND POINT

8 Goyder Street, Corrigin  
Opening hours: Wed 1pm - 5pm | Sat 8.30am - 12.30pm

- Sign up for a scheme ID at [www.containersforchange.com.au](http://www.containersforchange.com.au)
- Collect eligible containers
- Earn 10¢ per eligible container dropped off
- Refunds are by direct deposit only
- Photo ID is required for >825 containers, and signed declaration for >1500 containers in one drop. The refund point may refuse containers without declaration
- To arrange bulk disposals, contact the Shire on (08) 9063 2203.

**Please remember that all containers are sorted and counted by hand, so please bring them in practical containers or bags. Large, heavy bins cannot be handled.**



## BENDERING WASTE SITE

Bendering Regional Landfill services the Roe Regional Organisations of Councils (RoeROC) Shires of Corrigin, Kondinin, Kulin, and Narembeen. The facility is run by Avon Waste (phone: 9641 1318), who is contracted by the RoeROC Shires. Corrigin residents must dispose of asbestos at the Bendering Regional Landfill. To do this, you'll need a disposal permit, which can be arranged by contacting the RoeROC Environmental Health Officer Brendon Gerrard on 0409 777 824.



## REGULAR WASTE & RECYCLING SERVICES

The Shire partners with Avon Waste for weekly general rubbish and fortnightly recycling collections. You should place your bins out the night before collection, with the lid opening facing the road, and keeping at least 50cm between bins

### ✓ What to put in your recycling

- **Cardboard** - clean, flattened boxes and cartons
- **Paper** - clean, untied newspaper, magazines, paper, envelopes, telephone books
- **Plastic** - clean and empty bottles and containers marked with 1, 2, 3
- **Aluminium** - clean cans, tins and foil
- **Steel** - clean cans, tins and aerosol cans
- **Liquid paperboard** - clean milk, juice and laundry detergent cartons

### ✗ What NOT to put in your recycling?

- **Electric goods** - computers, mobiles, e-waste
- **Styrofoam and polystyrene**
- **Plastic Bags**
- **Glass** - bottles, jars
- **Steel Products**

## WASTE TRANSFER STATION

Brookton-Corrigin Road 3km west of Corrigin  
Open Monday & Wednesday 10am - 2pm  
Friday & Saturday 10am - 3pm | Sun 9am - 12pm  
Closed: Good Friday, Christmas Day, and New Years Day

### Fees apply for disposal of:

- Septic and liquid waste - Accepted only from DWER licensed contractors with tracking forms
- Loads of waste in excess 1 cubic metre, a permit is required prior to delivery. Please contact the Shire on 9063 2203 to obtain a permit.





## Rates Due Date & How to Pay

The Shire provides two options for payments of rates:

**Option 1** - Payment in full due **29/08/2025**

**Option 2** - Payment in 4 instalments. This incurs a \$10.00 administration charge per instalment, and instalment interest of 5.5% per annum.

**Instalment 1 - Due 29/08/2025**

**Instalment 2 - Due 29/10/2025**

**Instalment 3 - Due 05/01/2026**

**Instalment 4 - Due 05/03/2026**

Payments can be made in person at the Shire of Corrigin Office, 9 Lynch Street, Corrigin, by cheque, cash, credit card or EFT. Online payments are also available by visiting [www.corrigin.wa.gov.au](http://www.corrigin.wa.gov.au) and clicking 'pay My Rates'. Please ensure online payments are made in time for bank processing, with funds received by the Shire by 4.30pm on 29/08/2025 to avoid penalties.

## How Your Rates Are Calculated

Council rates are based on the revenue required to deliver essential community and infrastructure services. Each ratepayer contributes a proportionate amount of the costs based on their properties Gross Rental Value (GRV) or Unimproved Value (UV).

## Penalty Interest Charges on Overdue Rates

In accordance with the *Local Government Act 1995*, an interest rate of 11% is charged on overdue rates and charges after the due date. Interest accrues daily until all overdue rates and charges are paid in full. Eligible pensioners are exempt from interest charges.

## Financial Hardship

Council's Rates Collection and Financial Hardship Policy supports ratepayers in our community experiencing hardship due to like events impacting their ability to pay their rates. To discuss a suitable payment arrangement, please contact the Rate Officer on 9063 2203.

## Register for Email of Rates Notice

To register to receive your rates notice via email, please complete the Change of Owner details on the back of your rates notice and return to [shire@corrigin.wa.gov.au](mailto:shire@corrigin.wa.gov.au)

Please note, only ONE email address per household can be assigned.

## Local Government Rates Rebate

The Pensioner and Senior Concession Scheme offers eligible pensioners and seniors a rebate or deferment on their local government rates and Emergency Services Levy.

To be eligible, you must own and occupy your home as of 1 July of the relevant rating year. Ownership means being listed as the registered owner on the property's Certificate of Title.

You must also be a holder of a valid:

- a) Pensioner Concession Card issued by Centrelink/ Veterans Affairs (50% rebate); Or
- b) WA Seniors Card issued by the office of Seniors Affairs AND a Commonwealth Seniors Health Care Card (50% rebate); Or
- c) State Concession Card (50% rebate); Or
- d) WA Seniors Card only (25% rebate).

Applications for these rebates can be made by phoning the Water Corporation who administer the rebate scheme on 1300 659 951 or provide an online application via [www.watercorporation.com.au](http://www.watercorporation.com.au)

The eligibility date will be that of your application lodgement date with the Water Corporation and can not be back dated.

### STEP 1 TOTAL RATES REQUIRED TO RUN THE SHIRE OF CORRIGIN



### STEP 2 HOW THE RATE IN THE DOLLAR IS CALCULATED



### STEP 3 RATES THAT YOU PAY



# WHERE DO MY RATES GO?

Your rates are invested directly back into the community, in conjunction with capital grants to maintain and improve local services, infrastructure, and facilities. They help ensure things keep running smoothly, safely, and sustainably.



## Transport

Road Construction and Maintenance, Town Maintenance, Street Cleaning, Street Lighting, Footpaths, Licensing Services, and Corrigin Airstrip

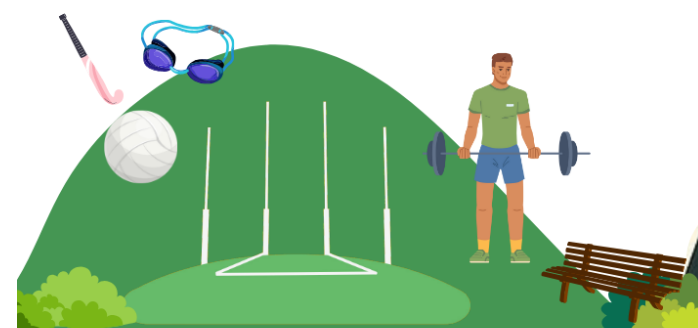
**\$8,536,239.00**



## Recreation & Culture

Recreational and cultural facilities including Public Halls, Swimming Pool, Sporting Ovals, Parks and Gardens, and Gym

**\$3,227,283.00**



## Community Amenities & Housing

Waste Collection, Public Bathrooms, Town Planning, Cemetery Management, and Housing Costs

**\$1,281,951.04**



## Administration & Governance

Members of Council, Rates Expenditure, Private Works, and Administrative Operations

**\$1,926,372**



## Health, Law Order & Public Safety

Animal Control, Fire Prevention, Environmental Health, Doctor Surgery, Dental Services, and general Health and Wellbeing Initiatives

**\$999,285.50**



## Education, Welfare and Economic Services

Community Resource Centre, Area and Tourism Promotion, Aged Care Services, Caravan Park, Dog Cemetery, Building Services, Standpipes, Saleyards, and Community Development Initiatives.

**\$880,716.00**





# Have a Thought? Let us Know!

The Shire of Corrigin is dedicated to delivering friendly, professional, and efficient services to our community. We value your feedback and welcome you to get in touch. Whether it's a questions, suggestion or something to report. You can contact us by phone on (08) 9063 2203, visit our website, or simply scan the QR code to fill out our quick and easy online form. Together, let's keep Corrigin a great place to live, work, and visit.



# Fees & Charges Updates

Council adopted the 2025/2026 Schedule of Fees and Charges. As a result of this, there has been multiple revised changes, and additions to the Fees and Charges. You can find the 2025/2026 Fees and Charges schedule on our website, or by scanning the QR code below.



# 2025/2026 BUDGET

The 2025/2026 Budget includes a 4% increase in rates revenue. This increase supports continued investment in our community, with focus on improving local roads, enhancing parks and ovals, and upgrading essential plant and equipment.

# Capital Expenditure Snapshot

## Roads

\$2,279,009



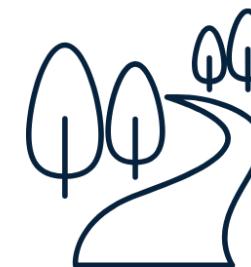
## Plant & Equipment

\$1,775,000



## Parks and Ovals

\$620,000



Other  
Infrastructure  
\$160,500



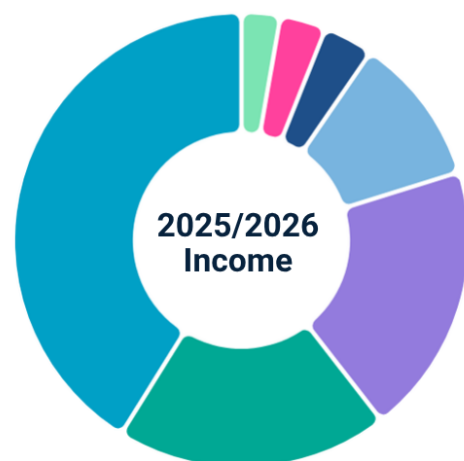
Furniture &  
Equipment  
\$107,500



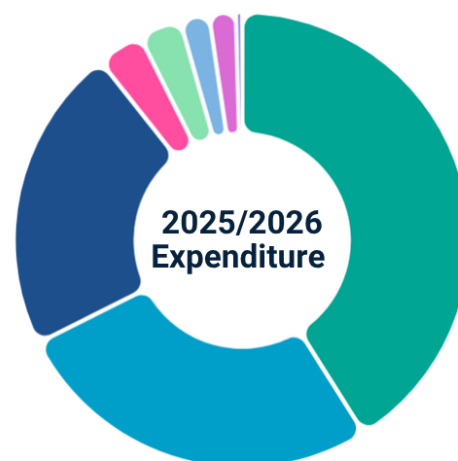
Land and  
Buildings  
\$370,000



# Expenditure and Income Breakdown



	Rates \$3,283,996
	Capital Grants, Subsidies and Contributions \$1,545,354
	Operating Grants, Subsidies and Contributions \$1,543,011
	Fees and Charges \$843,808
	Interest Revenue \$283,999
	Other Revenue \$261,461
	Profit on Asset Disposal \$218,867



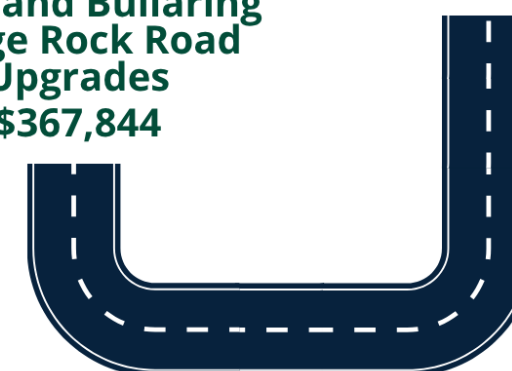
	Depreciation \$4,714,278
	Employee Costs \$3,045,931
	Materials and Contracts \$2,500,851
	Utility Charges \$374,880
	Insurance \$346,106
	Loss on Asset Disposal \$235,609
	Other Expenditure \$216,439
	Financial Costs \$51,087

# Capital Expenditure HIGHLIGHTS

CREC Oval  
Reticulation  
Upgrade  
\$500,000



Rabbit Proof Fence  
Road and Bullaring  
Gorge Rock Road  
Upgrades  
\$367,844



Wickepin Corrigin  
Road Upgrades  
\$498,000

Netball Court  
Shade & Fans  
\$140,000

